

PIONEERING GENOMICS TO POSITIVELY IMPACT LIFE

HUMAN HEALTH

INFECTIOUS DISEASE

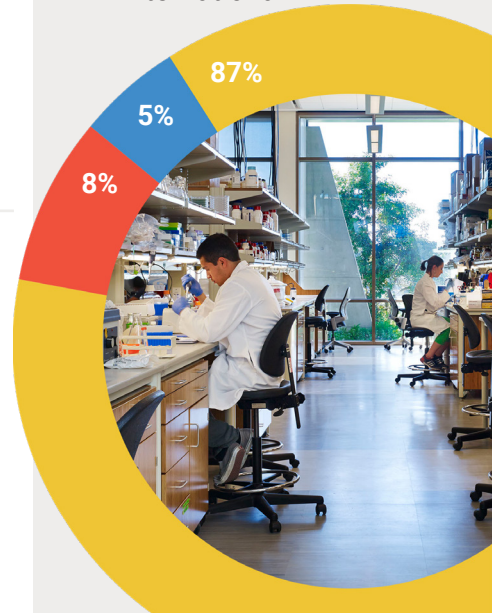
SYNTHETIC BIOLOGY

ENVIRONMENTAL SUSTAINABILITY


Founded in 1992, the J. Craig Venter Institute (JCVI) is a world leader in genomic research. We are a multidisciplinary team of 120 scientists and staff located in La Jolla, California and Rockville, Maryland with expertise in human genomics, the microbiome, bioinformatics, synthetic biology, infectious disease, and microbial and environmental genomics. Our scientists are innovators, creators, disruptors, and trailblazers who are fueled by a passion to undertake and successfully execute impactful research programs globally.

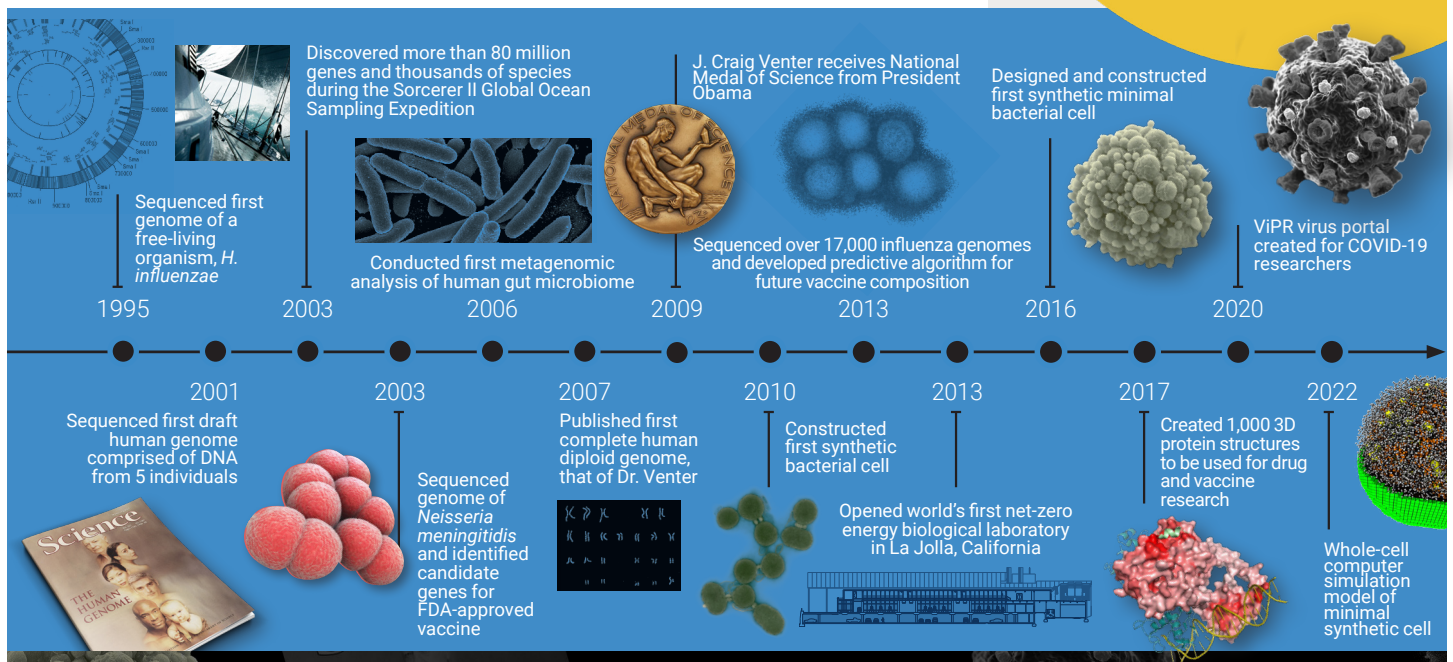
SOURCES OF FUNDING

- Federal Government
- Foundations/Philanthropy
- Industry, Corporate and International



JCVI AT A GLANCE

- 3** Members National Academy of Sciences
- 1** Member National Academy of Medicine
- 1** US National Medal of Science recipient
- 1** Nobel Laureate
- 31** Years of groundbreaking scientific discovery
- 6** Commercial entities spun out of JCVI research
- 26k** Publications in top tier, peer reviewed journals
-  First LEED Platinum certified biological laboratory building



JCVI

J. CRAIG VENTER INSTITUTE®

La Jolla, California
858-200-1800

Rockville, Maryland
301-795-7000

WWW.JCVI.ORG

Executive Management



J. Craig Venter, Ph.D.
Founder, Chairman
and Chief Executive Officer



Anders Dale, Ph.D.
President and Professor



John Glass, Ph.D.
Professor and La Jolla
Campus Director



Sanjay Vashee, Ph.D.
Professor and Rockville
Campus Director



Heather Kowalski
Chief Operating Officer



Katharine Wardle, MBA
Vice President, Finance



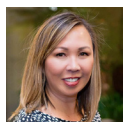
Julie G. Adelson, Esq
Vice President
and General Counsel



Jill Mullen
Senior Vice President,
Philanthropy and Alliances



Antony G. Peake, CRA
Vice President, Research
Administration



Mary C. Yumul, SPHR
Vice President, Human
Resources

Research Faculty

Distinguished Professors

J. Craig Venter, Ph.D.
Hamilton O. Smith, MD, Emeritus,
Nobel laureate
Clyde A. Hutchison III, Ph.D., Emeritus

Professors

Anders Dale, Ph.D.
Andy Allen, Ph.D.
Christopher Dupont, Ph.D.
Derrick E. Fouts, Ph.D.
John I. Glass, Ph.D.
Dan Gibson, Ph.D.
Tae Seok Moon, Ph.D.
Sanjay Vashee, Ph.D.

Associate Professors

Marcelo Friere, DDS, Ph.D., DMedSc
Yu "Max" Qian, Ph.D.
Nan Zhu, Ph.D.

Assistant Professors

Sinem Beyhan, Ph.D.
Norberto Gonzalez-Juarbe, Ph.D.
Yo Suzuki, Ph.D.
Gene Tan, Ph.D.

JCVI

J. CRAIG VENTER
INSTITUTE®

WWW.JCVI.ORG